

Enter your current user name and password used to login to your pc.

RapidIdentity

Livingston Parish Public Schools  
LPSS  
Excellence in Education

Login [Need help?](#)

Username

Password

Go

Don't have an account yet? Claim your account.

Claim My Account

Now you will be prompted to answer a few Challenge Questions.

RapidIdentity

Logged in as: RWeaver [Logout](#)

Livingston Parish Public Schools  
LPSS  
Excellence in Education

Update Challenge Question Responses

Pre-Defined Questions

You must answer at least 5 of the pre-defined questions below.

What is your favorite color?

Enter your answer

What city were you born in?

Enter your answer

What was or is your favorite subject in school?

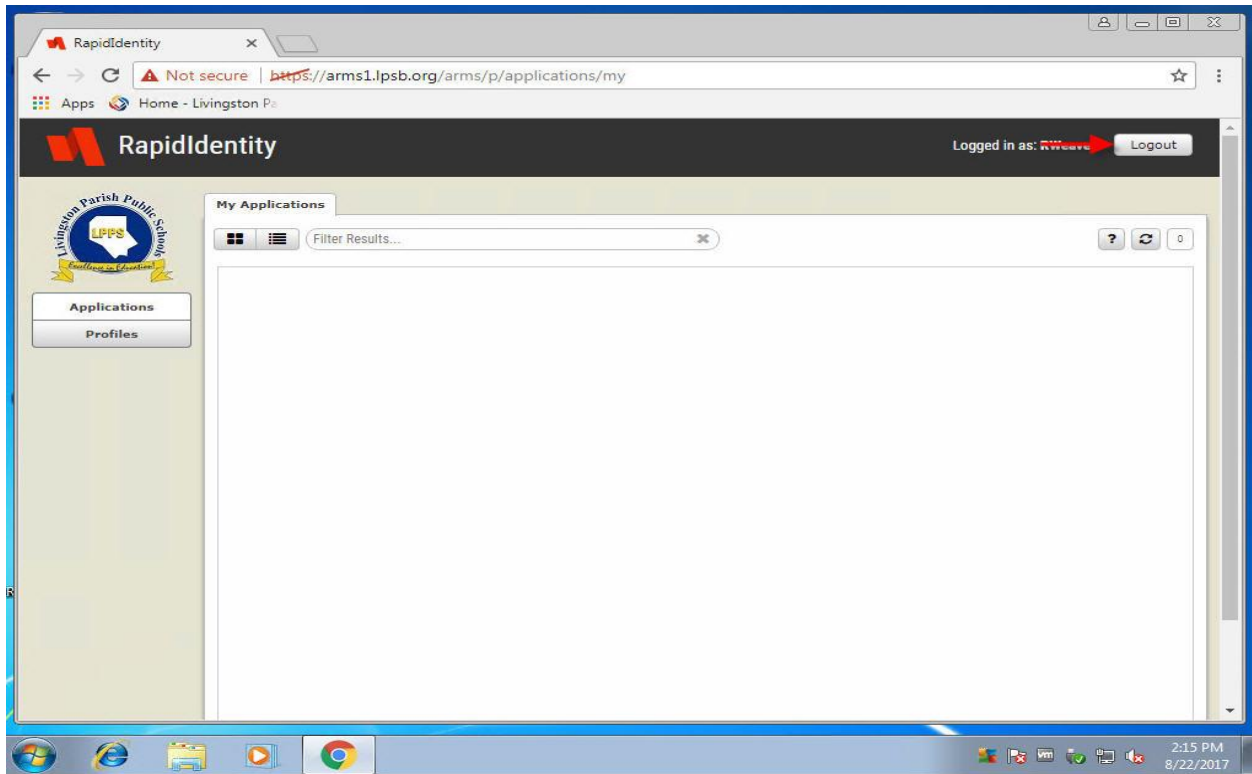
Enter your answer

What is the first name of your best friend?

Enter your answer

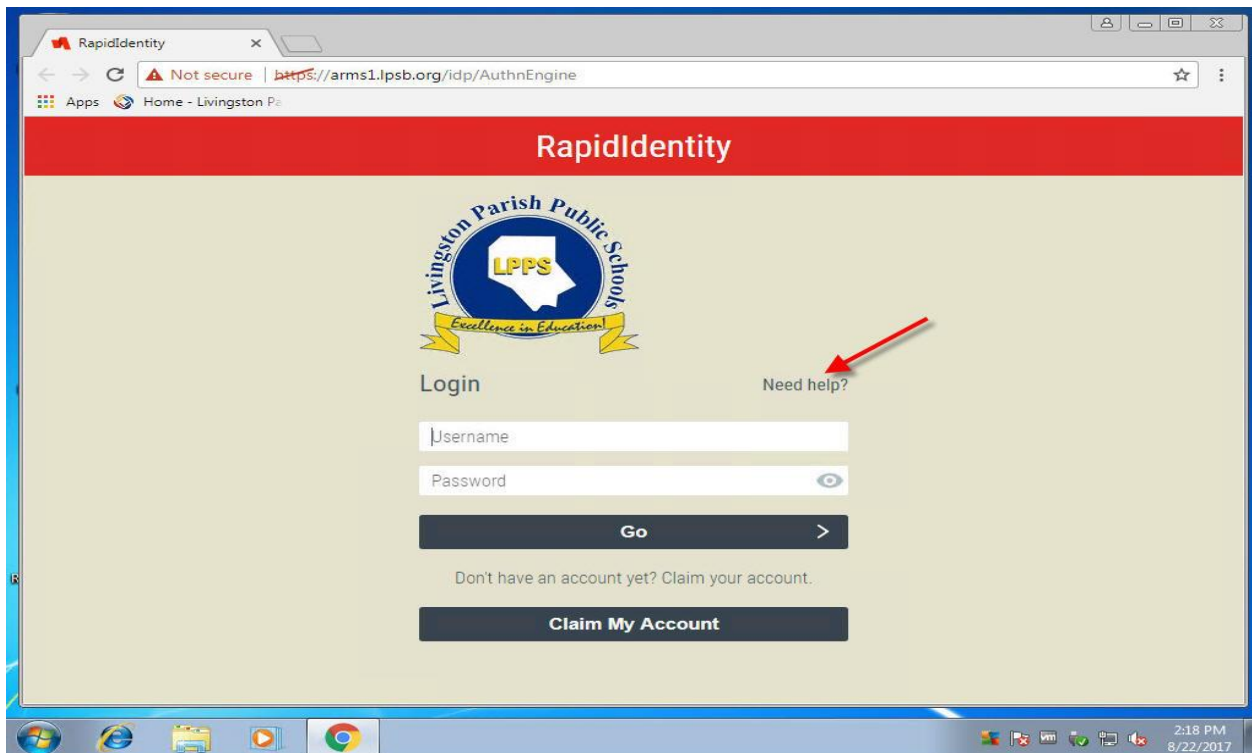
Once you have answered the questions, simply click save at the bottom of the page.

After you save your answers you will be logged into RapidIdentity. Click Logout.

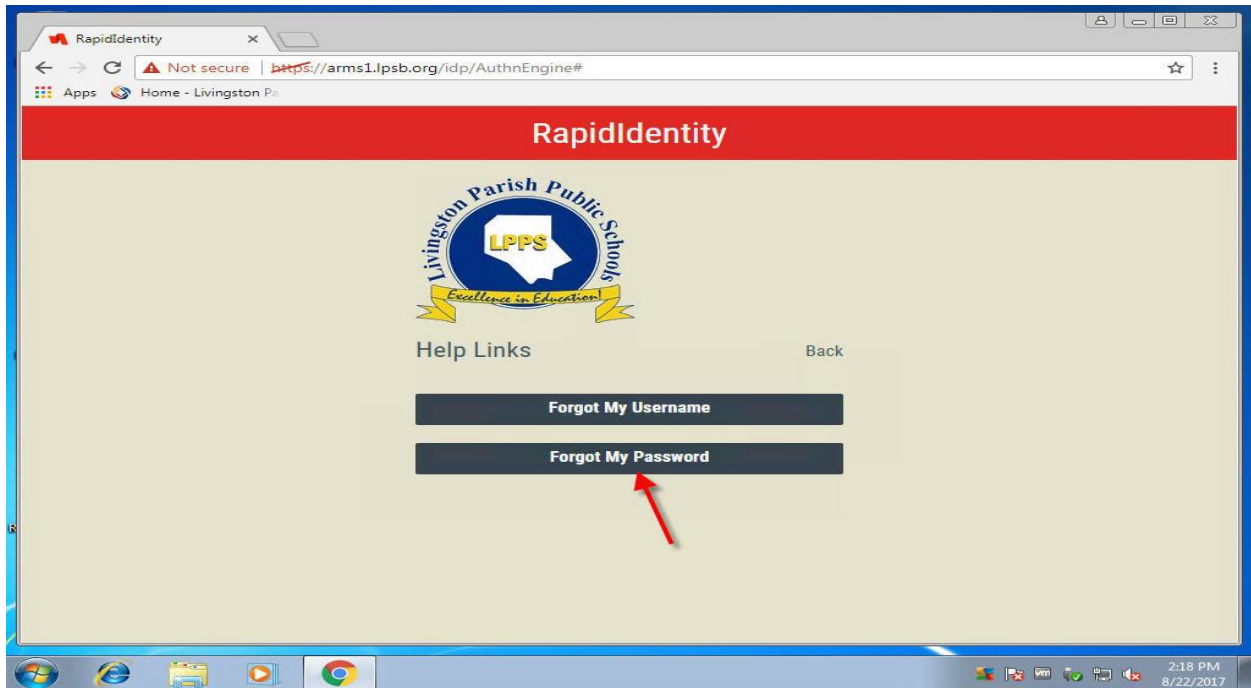


From this point if you ever need to reset your password or if you forget your password, you can go to any computer that is logged in and launch RapidIdentity and follow the steps below.

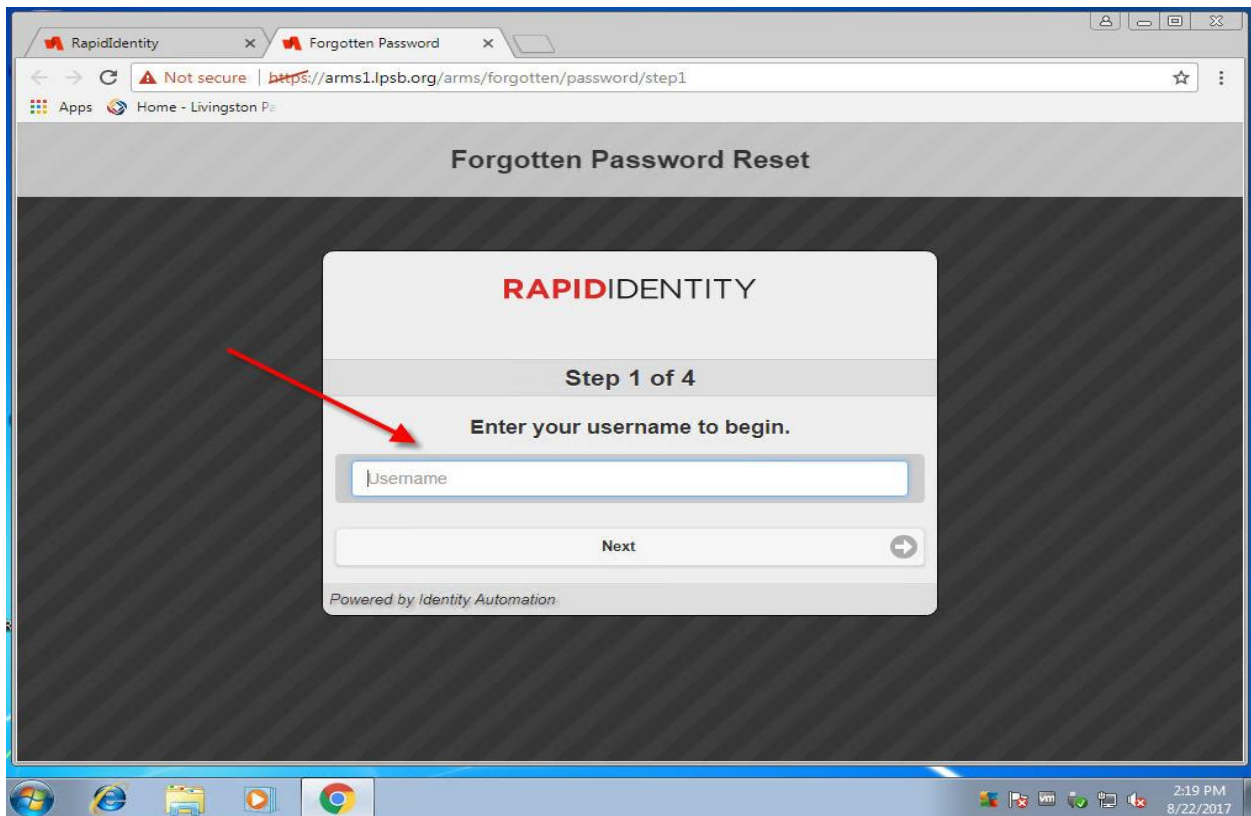
Launch RapidIdentity and click Need Help.



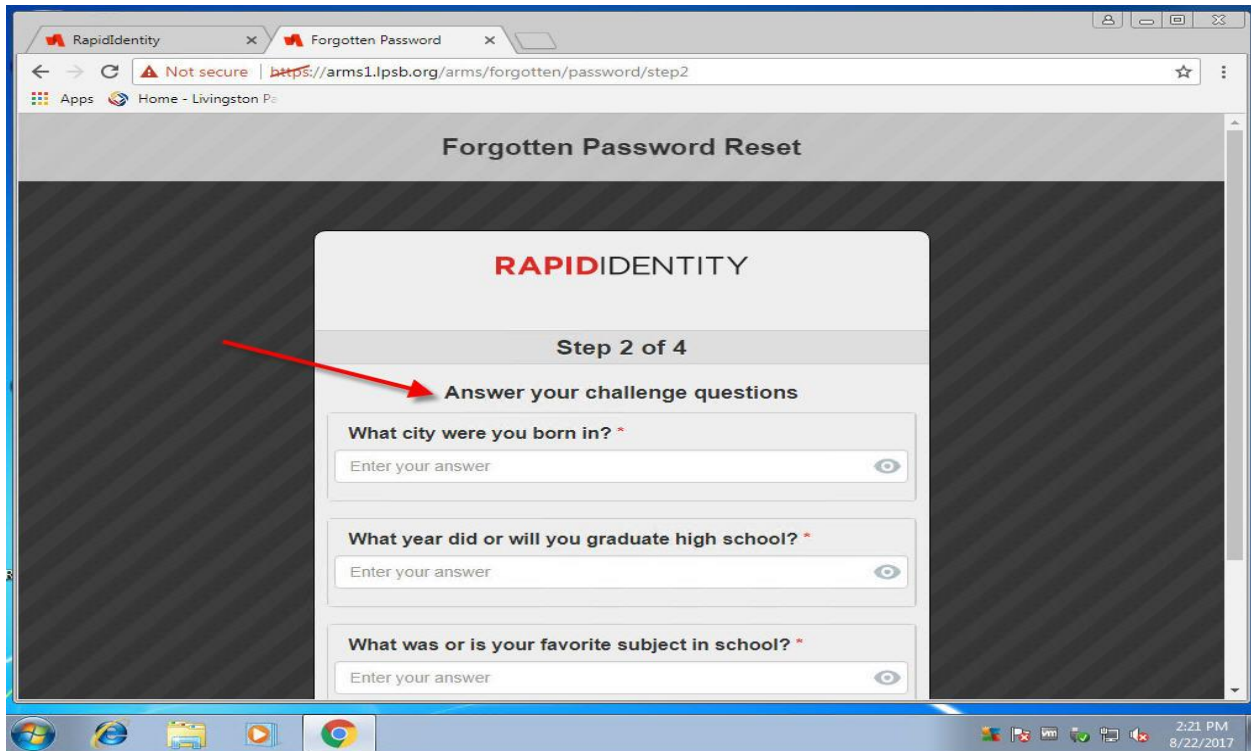
Next click Forgot My Password.



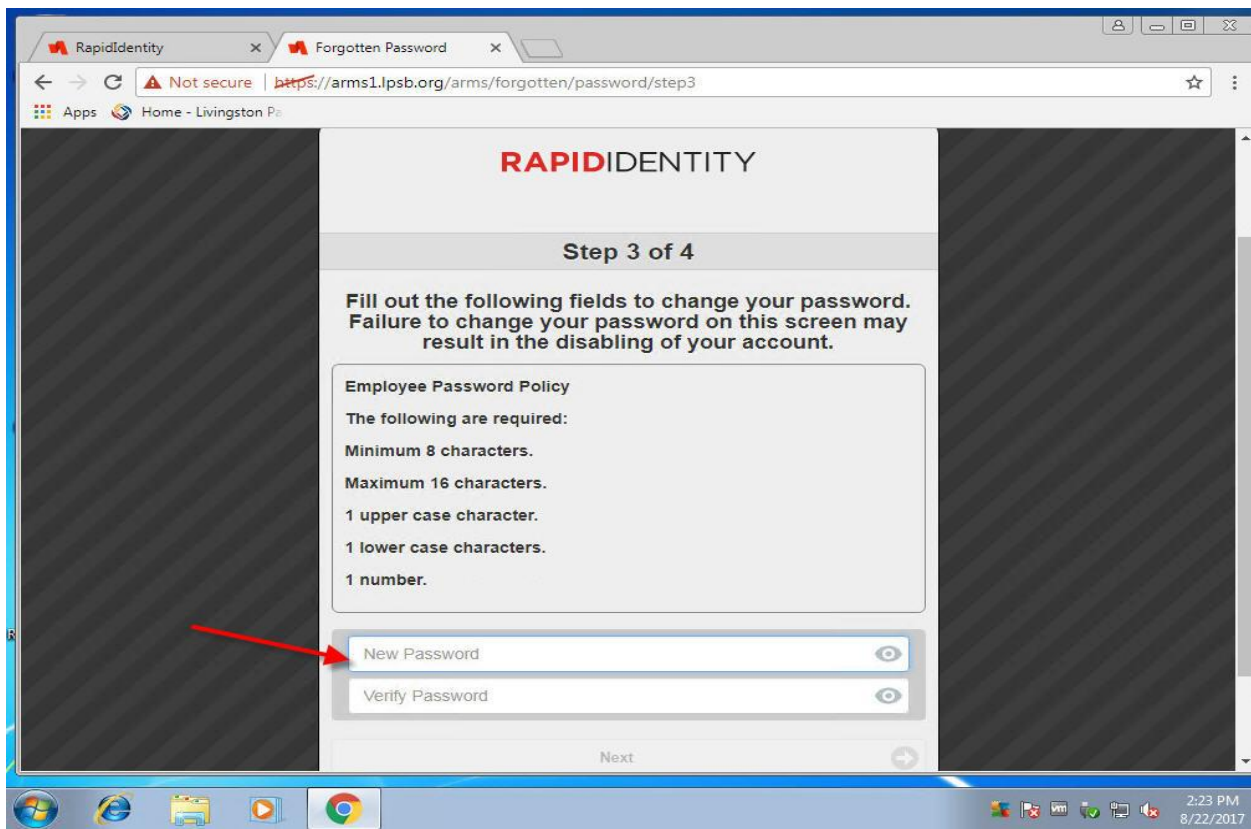
Enter your username and click Next.



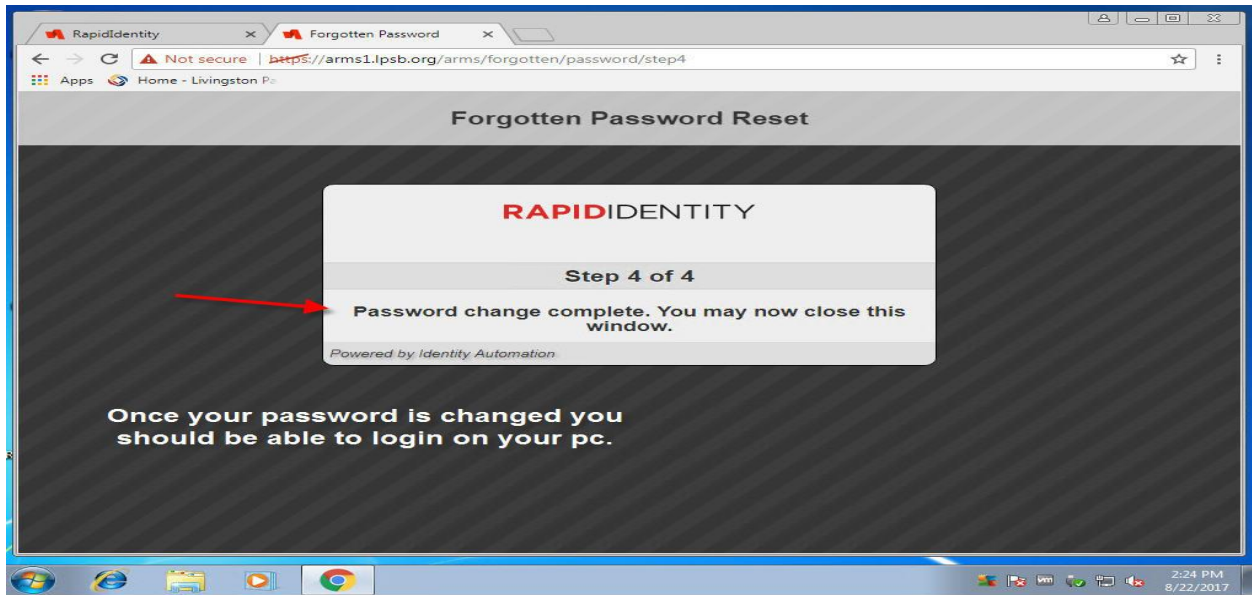
Answer your questions and click Next.



Enter your new password and click Next.



You should see Password Change Complete once the process completes.



Once you successfully change your password you can now go to your pc and login with your new password.